

W W B H

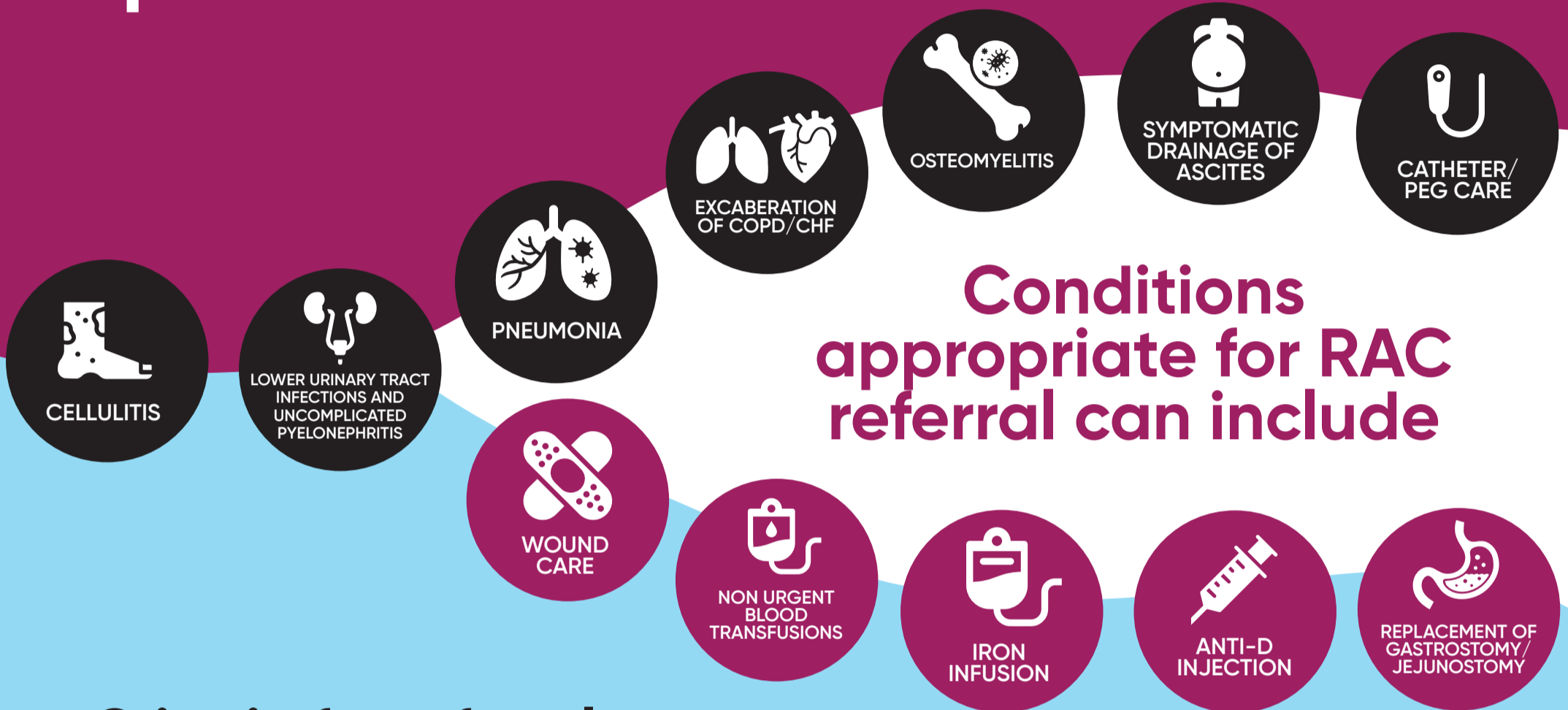
RAC

Rapid Access Clinic

Health Services Hub, Level 1

Monday to Friday
8:00am-7:00pm

Saturday and Sunday
8:00am-4:30pm



Conditions appropriate for RAC referral can include

Criteria for referral

- ✓ Aged 16 years or older
- ✓ Clinically stable and can mobilise in their usual manner
- ✓ Patient demonstrates competency and capacity and consents to non-ED alternative to the RAC
- ✓ Requires rapid assessment, diagnosis or intervention
- ✓ Method of transport to the RAC unit may be via private transport or NSW Ambulance

Referral from GPs to include

- ① Patient details including contact details
- ② Clinical summary
- ③ Current medication list
- ④ Recent pathology results (less than 6 weeks old for iron infusions - FBC, UCE, iron studies)

RAC Medical Officer

Tel: (02) 5943 2514 / 0427 862 391

Fax: (02) 5943 3188

